

# Armlock® 281

## Direct-Pull Magnet



The Adams Rite Door magnet range are surface mounted direct pull magnets that are used as part of an access control system for electric locking applications.



### Key Benefits

- Suitable for use on aluminium, timber and steel doors
- Compact case size and clean aesthetics
- Magnetic holding force of at least 510kg (1120 lbs)
- Has a security pin feature to help prevent unauthorised removal of the magnet from the door frame fixing plate
- Offers durability and low maintenance
- Available as a double magnet model
- User selectable dual voltage - 12 or 24vDC
- CE marked
- Monitoring available (Hall Effect)
- Built in voltage spike suppressor

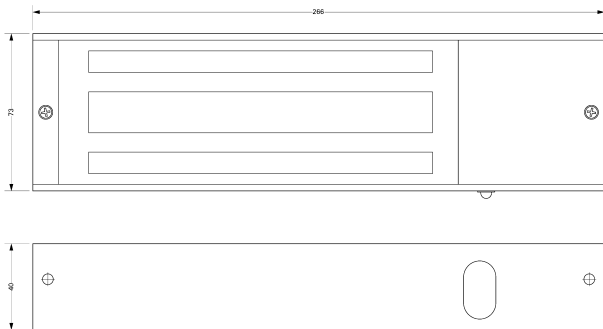
### Related Hardware

'L' and 'Z' Brackets ~ 4591M & 999M Monitored Paddle Handle & Exit Device Switching Accessories ~ RiteKey Keypad ~ Push-to-Exit Button ~ Power Supply Unit

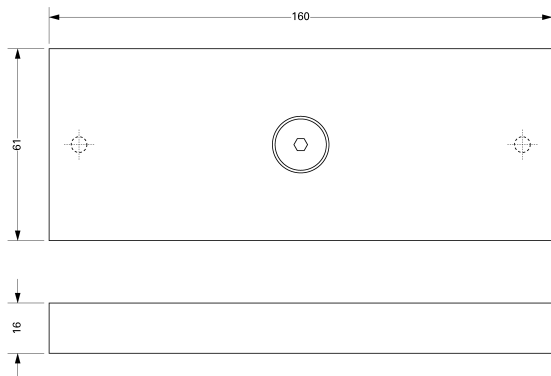
**Note:** For out of hours security specify the Sentinel 6 Deadlock in conjunction with the direct-pull magnet.

## Dimensions

### Armlock® 281-005

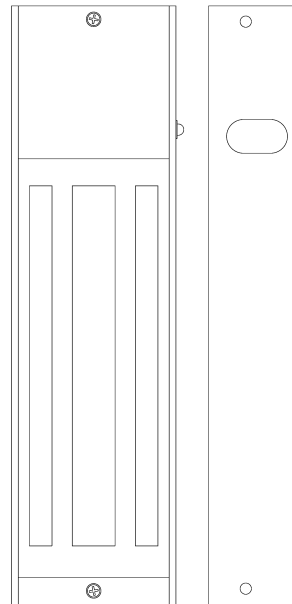


### Armature for Armlock 280® Series Magnets



## Specifications

<b>Single Magnet:</b>	40mm x 266mm x 73mm.
<b>Double Magnet:</b>	40mm x 532mm x 73mm.
<b>Armature:</b>	16mm x 160mm x 61mm. (2 no. for double magnet).
<b>Nominal Holding Force:</b>	510kg (1120lbs).
<b>Supply Voltage:</b>	12 or 24vDC (±15%).
<b>Nominal Current:</b>	480mA @ 12vDC, 240mA @ 24vDC. Dual coil. Built-in voltage spike suppressor.
<b>Monitoring:</b>	Relay dry contact with LED.
<b>Door Gap:</b>	Maximum 3mm (1/8").
<b>Positioning:</b>	Outward opening - surface mounted to door frame header. Inward opening - door frame header using 'L' & 'Z' brackets.
<b>Magnet Housing:</b>	Brushed satin aluminium.
<b>Note:</b>	To achieve immediate release, it is important that the release switch breaks the circuit on the positive supply to the magnet.



## Ordering Codes

- 281-000** Surface mounted single direct-pull magnet, 12/24vDC, non-monitored, suitable for timber or metal door applications.
- 281-200** Surface mounted double direct-pull magnet, 12/24vDC, non-monitored, suitable for timber or metal door applications.
- 281-005** Surface mounted single direct-pull magnet, 12/24vDC, monitored, suitable for timber or metal door applications.
- 281-205** Surface mounted double direct-pull magnet, 12/24vDC, monitored, suitable for timber or metal door applications.
- 268-600** Armlock® 260/280 Series glass armature bracket

### Parts

- 281-300** Spare armature plate only for 280 Series.